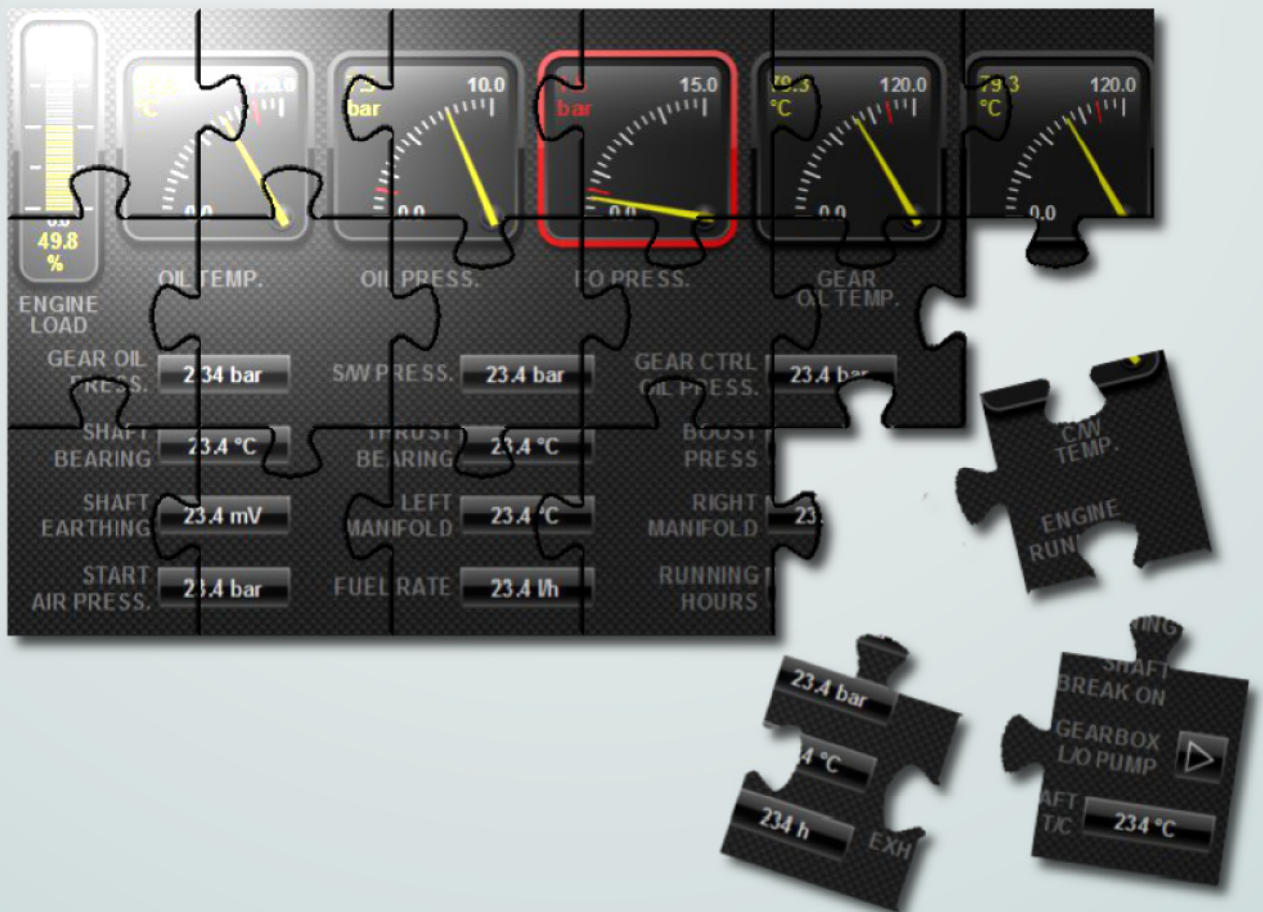


ROCKSON AUTOMATION

Add-Ons and Applications for

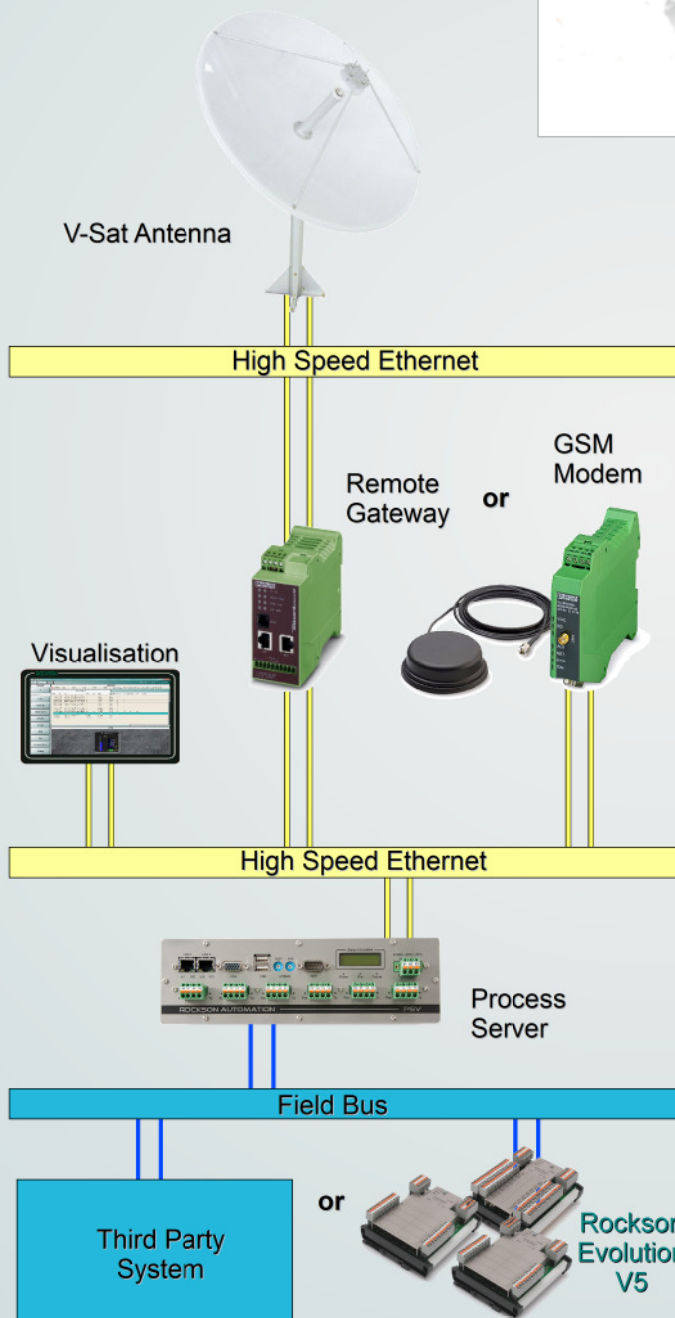
Integrated Control and Monitoring System

EVOLUTION V5



ROCKSON AUTOMATION

Remote Communication Low Cost – High Value



Added Value

- remote situation analysis
- support crew onboard from office in case of troubleshooting
- preparation/optimisation for maintenance visits or spare parts
- regular history/trend downloads and monthly
- data conditioning/provision
- bugfixes
- changes for project possible (mimics, functions, parameters)

Characteristics

- communication via GSM or fleet broadband
- system extension if needed
- communication has to be activated onboard

ROCKSON AUTOMATION

Engine Data Acquisition EDA plug-and-play installation for existing situation

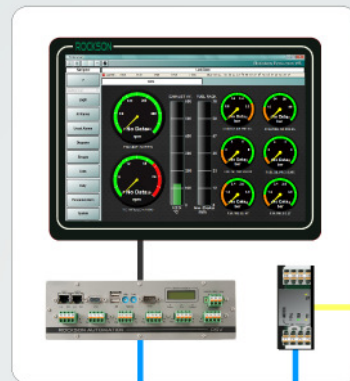
Existing third party
automation system

(engine control room)



Main Cabinet

(engine room /
emergency control
location)



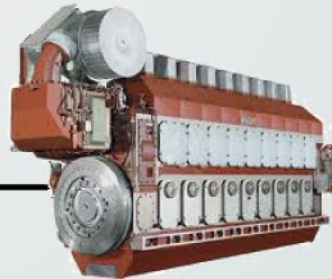
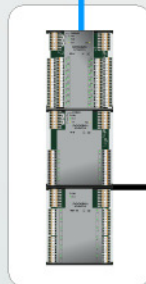
Engine Safety System
Engine PLC
Gateway x

CANopen bus (existing)

Fieldbus (RS485)

Outstation for
local sensor pickup

(elective for
most suitable
location)



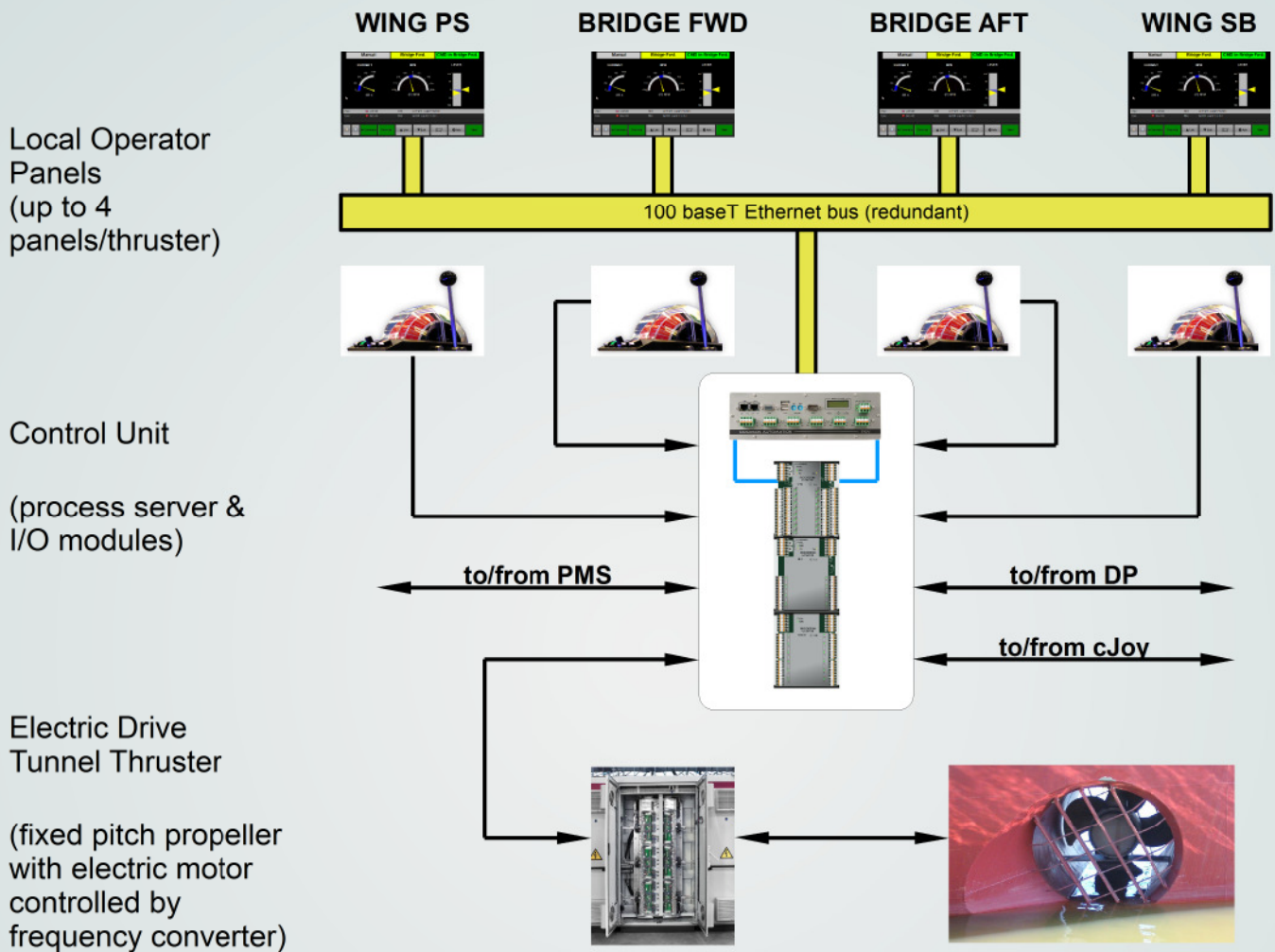
Basic Characteristics

- backup system for each engine
- independent from existing automation solution
- local information and visualization center with 10" touch panel
- local operation for start/stop management
- local alarming and earth fault indication
- CAN interface for maintaining existing automation connections
- maintaining individual local readouts and controls
- cabinets and wiring easy to integrate

ROCKSON AUTOMATION

Tunnel Thruster Control

reliable – user friendly – customized



Basic Characteristics

- stand-alone tunnel thruster control with up to 4 control panels
- interoperation with PMS, cJoy and DP
- local information and mode control with 7" touch panel
- easy to adjust to sensor characteristics
- local operation for start/stop management incl. control permission handling
- control of motor start-up and motor rotation speed and direction
- technical concept by

PDi beiramar

www.pdibeiramar.com

ROCKSON AUTOMATION

BNWAS GUARDIAN V11

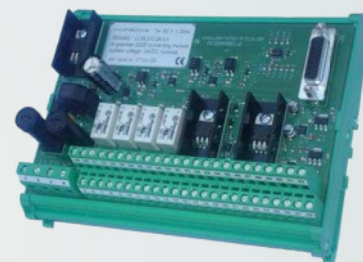
acc. MSC.128(75)

Characteristics and special features

- easy and comfortable use on bridge area or for engine room watch
- 2 x 16 character display with blue night illumination generates maximum of information and comfort
- compact connecting module picks-up all periphery equipment
- easy to install (complete installation within 3 min.)
- modern control philosophy with rotary encoder allows to check all connected devices and links
- all major classification societies, fully in compliance with IEC 62616 standard
- key switch for lock / unlock
- rotary encoder with integrated push button allow highest operating comfort
- integrated buzzer with soft start, 8 individual sound characteristics and volume adjustment
- emergency call facility (manual & alarm transfer)



operating device



connecting module



reset units



alarm panel stage #2